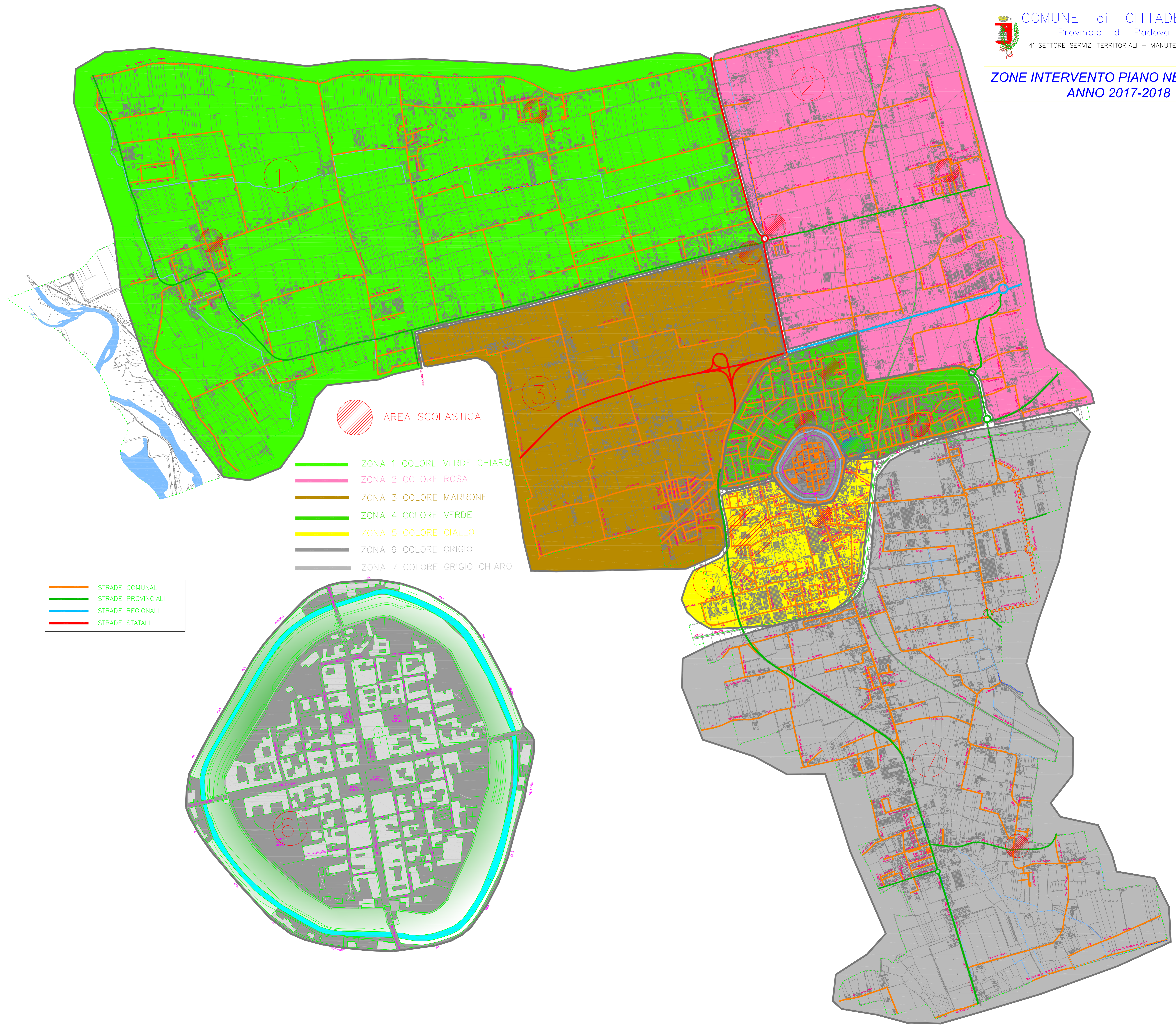



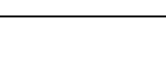


ZONE INTERVENTO PIANO NEVE
ANNO 2017-2018



-  AREA SCOLASTICA
-  ZONA 1 COLORE VERDE CHIARO
-  ZONA 2 COLORE ROSA
-  ZONA 3 COLORE MARRONE
-  ZONA 4 COLORE VERDE
-  ZONA 5 COLORE GIALLO
-  ZONA 6 COLORE GRIGIO
-  ZONA 7 COLORE GRIGIO CHIARO

-  STRADE COMUNALI
-  STRADE PROVINCIALI
-  STRADE REGIONALI
-  STRADE STATALI